

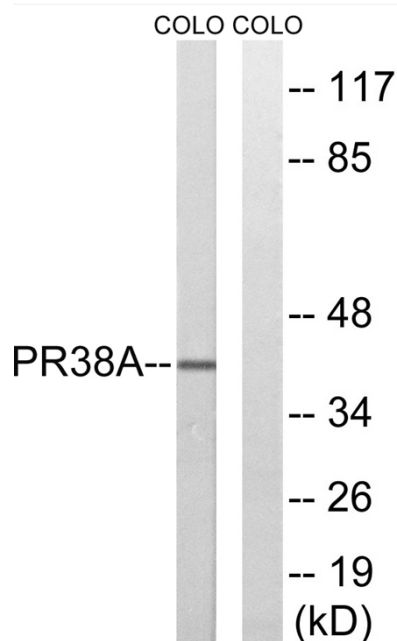


# PRPF38A Polyclonal Antibody

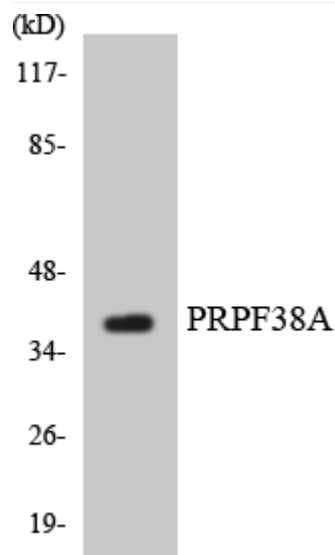
<b>Catalog No</b>	YP-Ab-01962
<b>Isotype</b>	IgG
<b>Reactivity</b>	Human;Mouse
<b>Applications</b>	WB;IHC;IF;ELISA
<b>Gene Name</b>	PRPF38A
<b>Protein Name</b>	Pre-mRNA-splicing factor 38A
<b>Immunogen</b>	The antiserum was produced against synthesized peptide derived from human PRPF38A. AA range:104-153
<b>Specificity</b>	PRPF38A Polyclonal Antibody detects endogenous levels of PRPF38A protein.
<b>Formulation</b>	Liquid in PBS containing 50% glycerol, 0.5% BSA and 0.02% sodium azide.
<b>Source</b>	Polyclonal, Rabbit,IgG
<b>Purification</b>	The antibody was affinity-purified from rabbit antiserum by affinity-chromatography using epitope-specific immunogen.
<b>Dilution</b>	WB: 1/500 - 1/2000. IHC: 1/100 - 1/300. ELISA: 1/20000.. IF 1:50-200
<b>Concentration</b>	1 mg/ml
<b>Purity</b>	≥90%
<b>Storage Stability</b>	-20°C/1 year
<b>Synonyms</b>	PRPF38A; Pre-mRNA-splicing factor 38A
<b>Observed Band</b>	40kD
<b>Cell Pathway</b>	Nucleus .
<b>Tissue Specificity</b>	Brain,Cervix,Epithelium,Placenta,
<b>Function</b>	function:May be required for pre-mRNA splicing .,similarity:Belongs to the PRP38 family.,
<b>Background</b>	function:May be required for pre-mRNA splicing .,similarity:Belongs to the PRP38 family.,
<b>matters needing attention</b>	Avoid repeated freezing and thawing!
<b>Usage suggestions</b>	This product can be used in immunological reaction related experiments. For more information, please consult technical personnel.



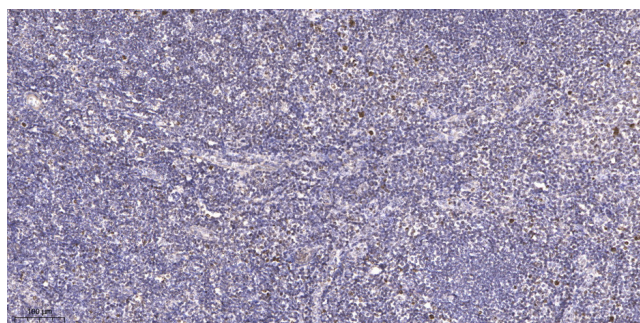
## Products Images



Western blot analysis of lysates from COLO cells, using PRPF38A Antibody. The lane on the right is blocked with the synthesized peptide.



Western blot analysis of the lysates from HUVEC cells using PRPF38A antibody.



Immunohistochemical analysis of paraffin-embedded human tonsil. 1, Antibody was diluted at 1:200 (4° overnight). 2, Tris-EDTA, pH 9.0 was used for antigen retrieval. 3, Secondary antibody was diluted at 1:200 (room temperature, 45 min).